

MATERIALS

Bangle, 2.6 inch (6,5 cm) in diameter

96 Button Beads, Crystal Capri Gold Full

32 Emma Beads, Pastel Burgundy

2 g Miyuki seed beads 11/0, #4215 Duracoat Sea Green

Needle size 11, elastic beading thread (like Sonoko Nozue beading thread)

New beads: Button and Emma



Button beads look like little studs in the design, their pointy ends make it easy to include them in many designs.

Emma beads bring the beadwork into the 3rd dimension.



All Beads Cz s. r. o.

Palackeho 3145/41
466 01 Jablonec nad Nisou
Czech Republic

www.all-beads-wholesale.com

Tel.: +420-483-000101
Fax: +420-226-013670
E-mail wholesale@all-beads.cz

all beads cz



Sabine Lippert

Emma's Bangle

Figure 1

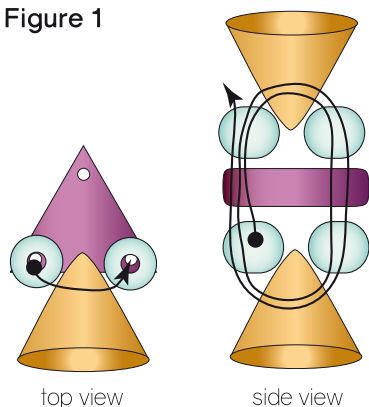


Figure 2

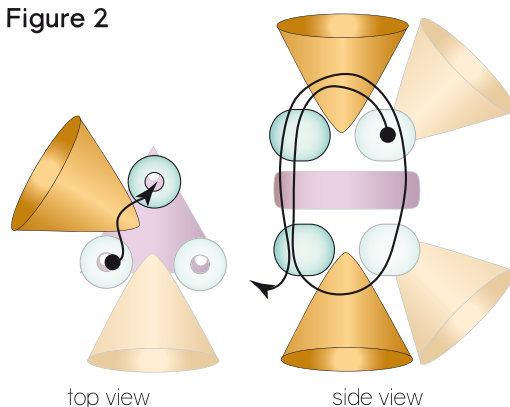


Figure 3

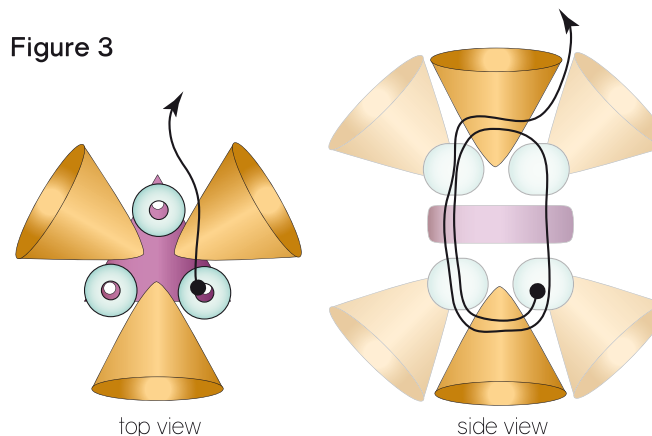
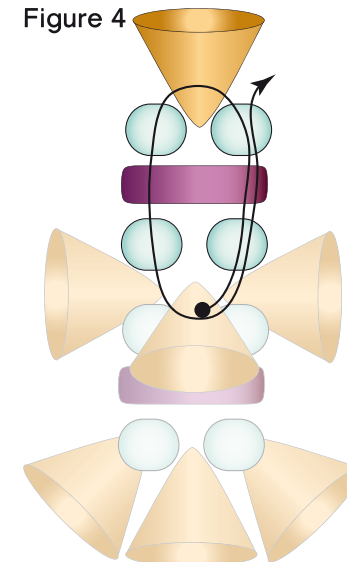


Figure 4



The bangle is made in RAW stitch. You can vary the length by adding/deleting units. As shown here, the bangle has a diameter of 6.5 cm. When you finish a thread, weave it in safely and make some half hitch knots in addition.

Step 1 (figure 1)

String 1 size 11°, 1 Emma Bead, 1 size 11°, 1 Button bead, 1 size 11° and weave down through the next hole on the Emma bead to the right side.

String 1 size 11°, 1 Button bead and weave through the size 11° where you started. Weave one more time through all the beads of the circle to secure the thread. Exit from the second size 11° added in this step.

Step 2 (figure 2)

String 1 Button bead and 1 size 11°. Weave down through the left adjacent hole of the Emma, string 1 size 11° and 1 Button bead and weave up through the right adjacent size 11°. Weave forward through the beads of this step and exit from the second size 11° just added.

Step 3 (figure 3)

String 1 Button bead and weave up through the left adjacent size 11°, Emma, 11°. String 1 Button bead and weave down through the right adjacent size 11°. Weave along the beads of this step and exit from the second Button bead just added.

Step 4 (figure 4)

String 1 size 11°, 1 Emma bead, 1 size 11°, 1 Button bead, 1 size 11° and weave down through the left adjacent hole of the Emma bead. String 1 size 11° and weave again through the Button bead where you started. Then weave forward through the beads of this step and exit from the second size 11° just added.

Step 5 (figure 5)

String 1 Button bead, 1 size 11° and weave down through the right adjacent hole of the Emma bead. String 1 size 11° and weave through the left adjacent Button bead and then up through the 11°, Emma, 11°. Weave forward through the beads of this step and exit from the right adjacent Button bead.

Step 6 (figure 6)

Starting from this Button bead on the third side, weave up through the right adjacent 11°, Emma, 11°, string 1 Button bead and weave down through the left size 11°, Emma, 11° of this unit. Weave forward and exit from the Button bead just added.

Step 7

Continue steps 4 to 6 until the bangle has the desired length and zip both ends.

Figure 5

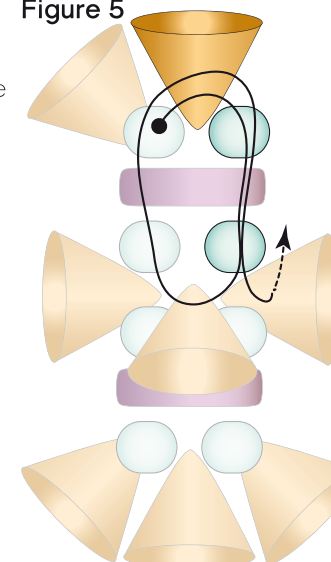


Figure 6

